

GROUND FLOOR PLAN

Tower 1 to 4

Size: 2410 square feet

4 Bedroom, 4 Bathroom, Utility, S.Room,

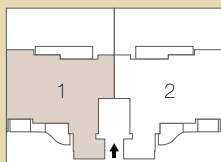
Front & Rear Lawn and Elevators



PALM TERRACES — SELECT —



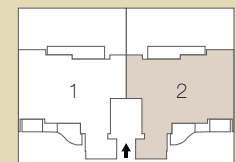
Key Plan



1 sq. metre = 1.196 sq. yard
1 sq. metre = 10.76 sq. feet.

In the interest of maintaining high standards, all floor plans, layout plans, areas, dimensions and specifications are indicative and are subject to change as decided by the company or by any competent authority. Soft furnishing, cupboards, kitchen cabinets, furniture and gadgets are not part of the offering.

Key Plan



GROUND FLOOR PLAN

Tower 1 to 12

Size: 2410 square feet

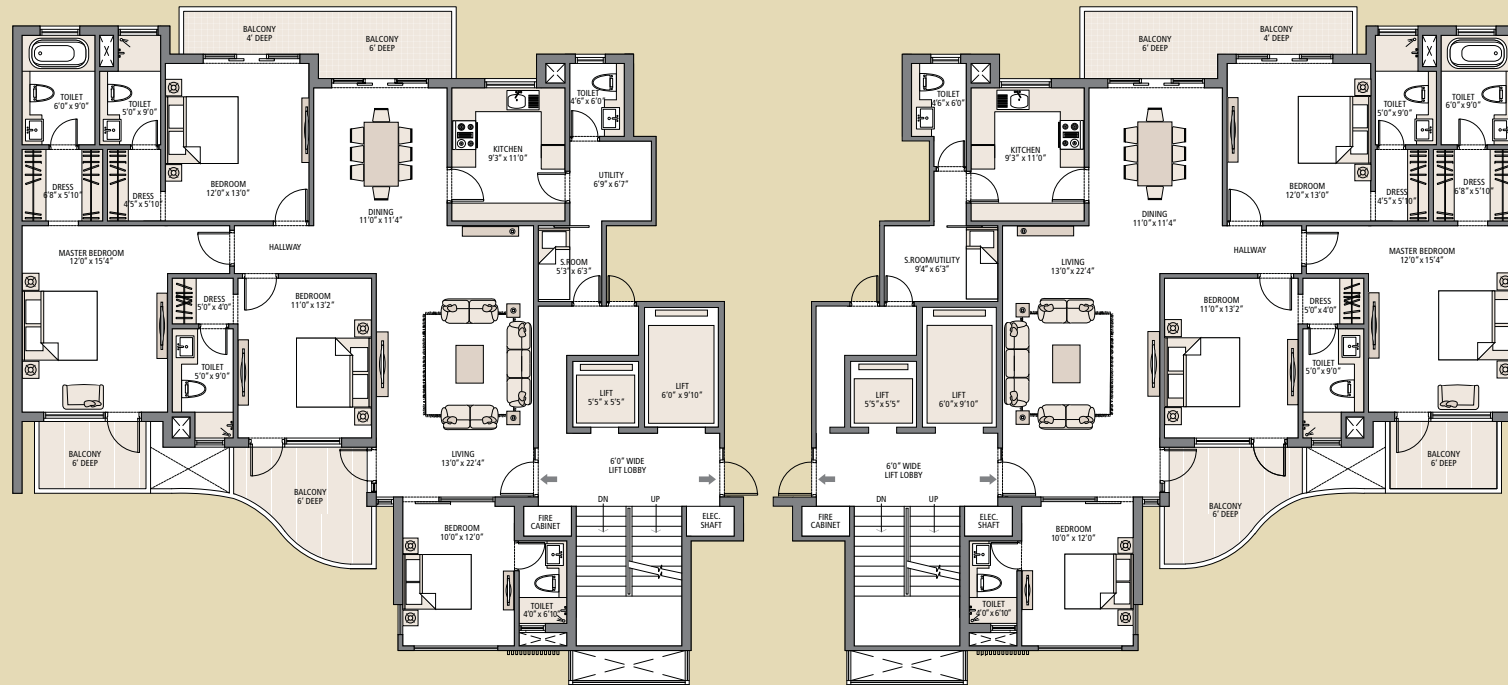
4 Bedroom, 4 Bathroom, Utility, S.Room,

Front & Rear Lawn and Elevators



PALM TERRACES

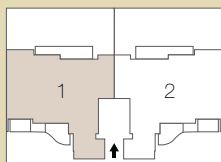
— SELECT —



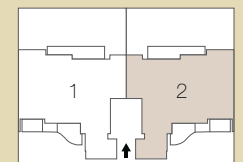
1 sq. metre = 1.196 sq. yard
1 sq. metre = 10.76 sq. feet.

In the interest of maintaining high standards, all floor plans, layout plans, areas, dimensions and specifications are indicative and are subject to change as decided by the company or by any competent authority. Soft furnishing, cupboards, kitchen cabinets, furniture and gadgets are not part of the offering.

Key Plan



Key Plan



PENTHOUSE1

Tower 5 to 12

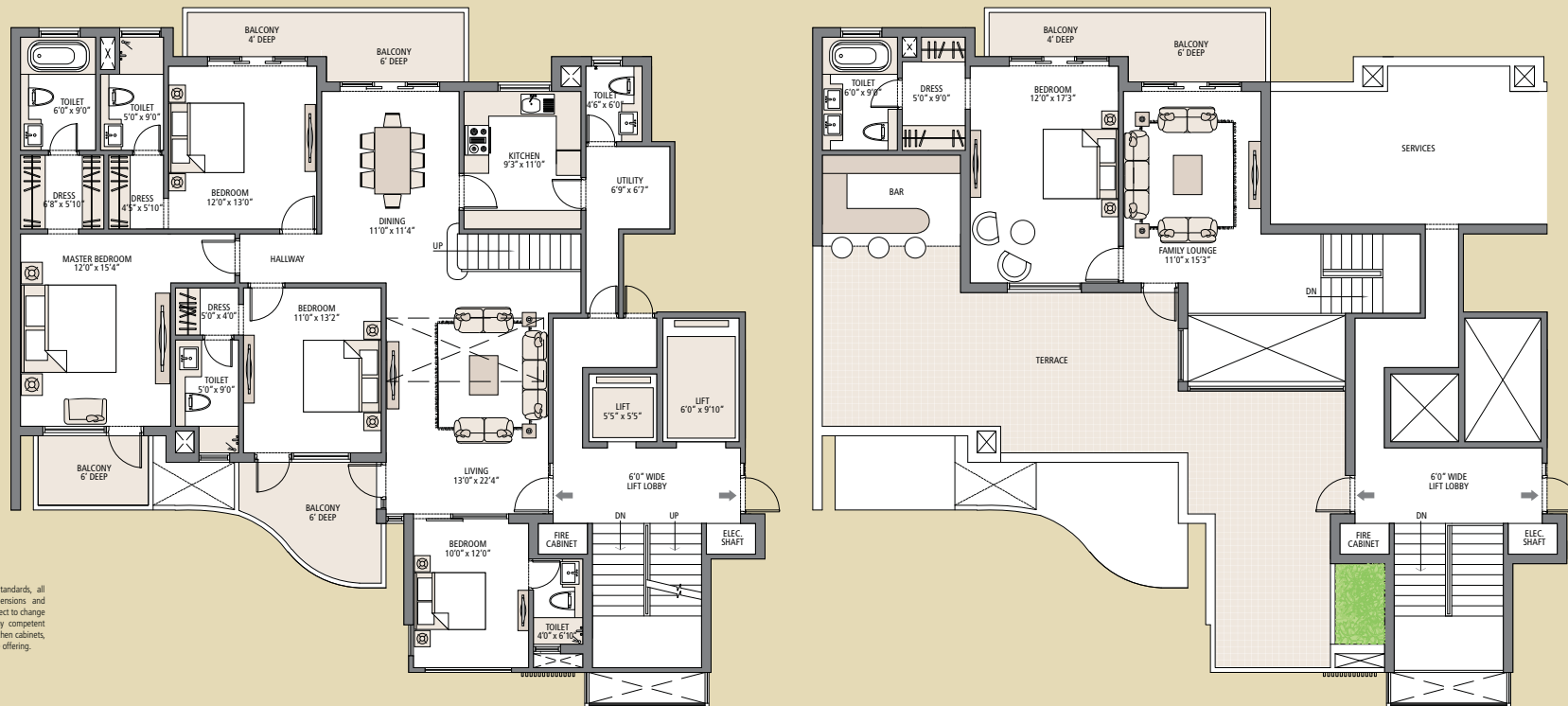
Size: 3670 square feet

5 Bedroom, 5 Bathroom, Utility, S.Room,

Party Terrace and Elevators



PALM TERRACES — SELECT —



1 sq. metre = 1.196 sq. yard
1 sq. metre = 10.76 sq. feet.

In the interest of maintaining high standards, all floor plans, layout plans, areas, dimensions and specifications are indicative and are subject to change as decided by the company or by any competent authority. Soft furnishing, cupboards, kitchen cabinets, furniture and gadgets are not part of the offering.

Key Plan

